

## COSMOS MEMBERSHIP SUPPORTS

- Data collection and processing guidelines
- Workshops and forums on other important seismic issues
- Educational materials on seismic strong-motion for practicing engineers
- Collaboration with the Center for Engineering Strong-Motion Data (CESMD)
- Consensus-based advocacy
- International standards for strong-motion data

## BENEFITS OF MEMBERSHIP

- Professional Development
- Technical Resources
- Networking

COSMOS is continuing to develop and offer workshops on strong-motion issues through its Annual Technical Sessions

In cooperation with USGS and CGS, COSMOS has established a Wiki page to increase communication between strong-motion network operations and between operators and users. It is available at the following link: <http://cosmos.eri.ucsb.edu/home>.

In addition to the benefits provided to the strong-motion community through its services and products, COSMOS direct benefits to members include:

- Reduced registration fee for the Annual Technical Session
- Reduced registration fees for COSMOS-sponsored short courses
- Opportunities to participate in consensus-based strategic advocacy on important issues facing the seismological and engineering community

## GENERAL MEMBERSHIP CATEGORIES

### Regular Members

- Sustaining Core Members (California Geological Survey and U.S. Geological Survey)
- Institutional Members (public agencies and private corporations at \$1000-\$5000)
- Individual Members (\$50)
- 

Membership is available by logging on to this online website:

Individual membership: <https://www.z2systems.com/np/clients/cosmos/membershipJoin.jsp>

and

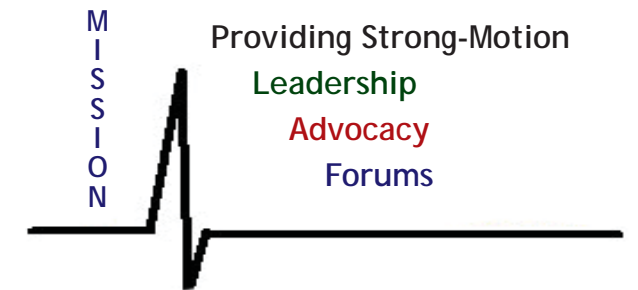
Organization membership: <https://www.z2systems.com/np/clients/cosmos/membershipJoin.jsp?&constTypeFlag=org>

COSMOS  
2443 Fillmore St., #380  
San Francisco, CA 94115-6131

Email: [cosmo@sstrong-motion.org](mailto:cosmo@sstrong-motion.org)

Phone: 877-495-3455

# COSMOS



To expand and modernize the acquisition and application of strong-motion data in order to increase public safety from earthquakes

COSMOS is a global focal point of international leadership, interaction, and cooperation for the acquisition, processing, dissemination, and application of earthquake strong-motion data.

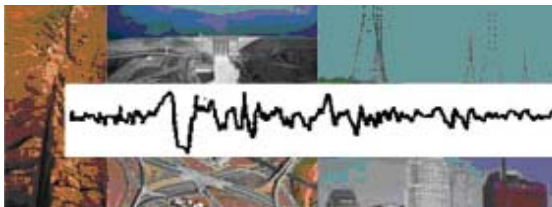
We are a public-interest non-profit corporation for earthquake safety.

## COSMOS IN ACTION

- Develops national policies and fosters innovative ideas for the urgent improvement of strong-motion earthquake measurements and their applications
- Promotes advancement of strong-motion measurements on the ground and in structures and lifelines in densely urbanized areas and locations of special significance likely to be struck by earthquakes
- Encourages and assists in rapid, convenient, and responsive distribution of standardized strong ground-motion data enabling programs, institutions, and engineers to solve mutual problems
- Develops guidelines for strong-motion data collection, processing, archiving, and distribution
- Provides decisive advocacy on both the federal and state levels for critical issues
- Sponsors forums to advance technical issues through national and international workshops

## MISSION

- To advocate for the establishment of strong-motion measurement systems
- To promote the development and adoption of verifiable, internationally ranked standards for the acquisition and processing of earthquake strong-motion measurements
- To promote the global application of strong-motion measurements by design professionals



## CENTER FOR ENGINEERING STRONG MOTION DATA

### CESMD--A COOPERATIVE EFFORT

The Center for Strong Motion Engineering Data (CESMD) is a cooperative center established by the California Geological Survey (CGS) and the U.S. Geological Survey (USGS) to integrate earthquake strong-motion data from the CGS California Strong Motion Instrumentation Program, the USGS National Strong Motion Project, and the Advanced National Seismic System (ANSS). The ANSS has several regions in the United States that recover strong-motion data, as well as locating earthquakes. Data from each region and from participating international networks are posted here for engineering use, with the source network identified.

The CESMD provides raw and uniformly processed strong-motion data for earthquake engineering applications and is advised by an Advisory Committee comprised of external data users, representing a range of engineering usages. To visit the CESMD go to:

[www.strongmotioncenter.org](http://www.strongmotioncenter.org)

To learn more about the seismic networks and centers cooperating in the CESMD, please visit:

CISN – California Integrated Seismic Network  
[www.cisn.org](http://www.cisn.org)

AEIC – Alaska Earthquake Information Center  
[www.aeic.alaska.edu](http://www.aeic.alaska.edu)

PNSN – Pacific Northwest Seismic Network  
[www.ess.washington.edu/SEIS/PNSN](http://www.ess.washington.edu/SEIS/PNSN)

IMW – Intermountain West Region, ANSS  
[www.earthquake.usgs.gov/regional/imw](http://www.earthquake.usgs.gov/regional/imw)

CEUS – Central and Eastern US Region, ANSS  
[www.earthquake.usgs.gov/regional/ceus](http://www.earthquake.usgs.gov/regional/ceus)

NEIC – National Earthquake Information Center, USGS  
[www.earthquake.usgs.gov/regional/neic](http://www.earthquake.usgs.gov/regional/neic)

## COSMOS OFFICERS

President: Wilfred D. Iwan

Vice President: Jon Heintz

Secretary: Jamison Steidl

Treasurer: Donald Wells

Director of Engineering Applications: Robert E. Bachman

## COSMOS MEMBERS

### Core Members

California Geological Survey

U.S. Geological Survey

### Institutional Members

Federal Emergency Management Agency

Earthquake Engineering Research Institute

California Department of Water Resources

Kinematics, Inc.

Puerto Rico Strong-Motion Network/Strong Motion Program

### Corresponding Strong-Motion Programs

Twenty-six programs worldwide.

2443 Fillmore St., #360  
San Francisco, California 94115-6131

[cosmos@strongmotion.org](mailto:cosmos@strongmotion.org)

Phone: 877-495-3455